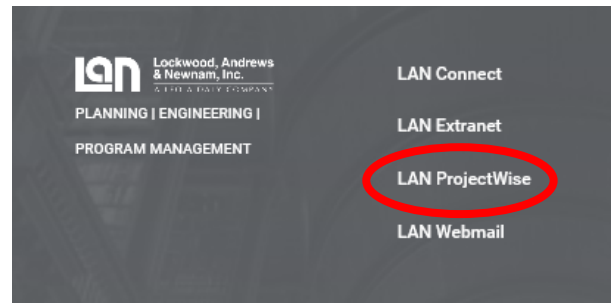


Projectwise Explorer

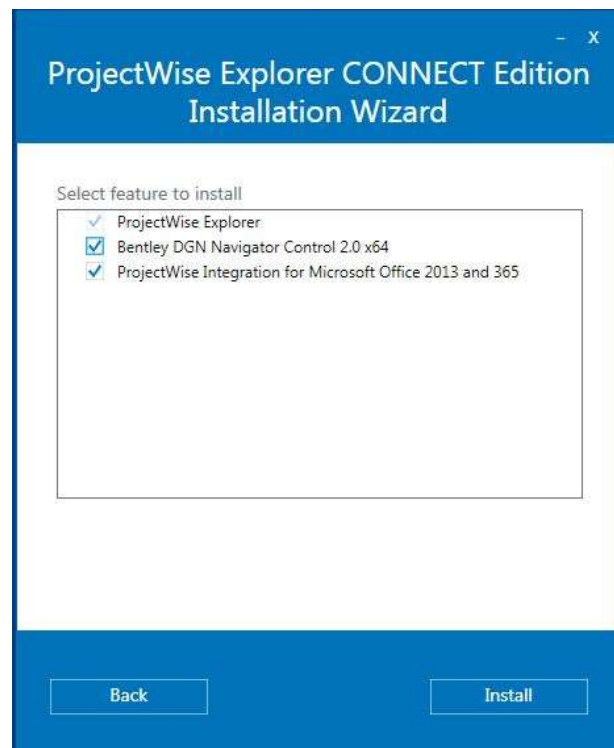
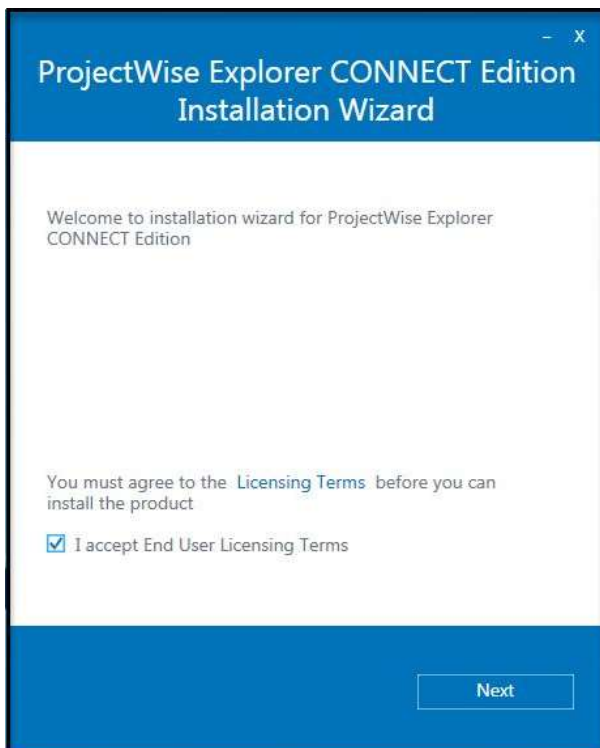
External User Installation Instructions



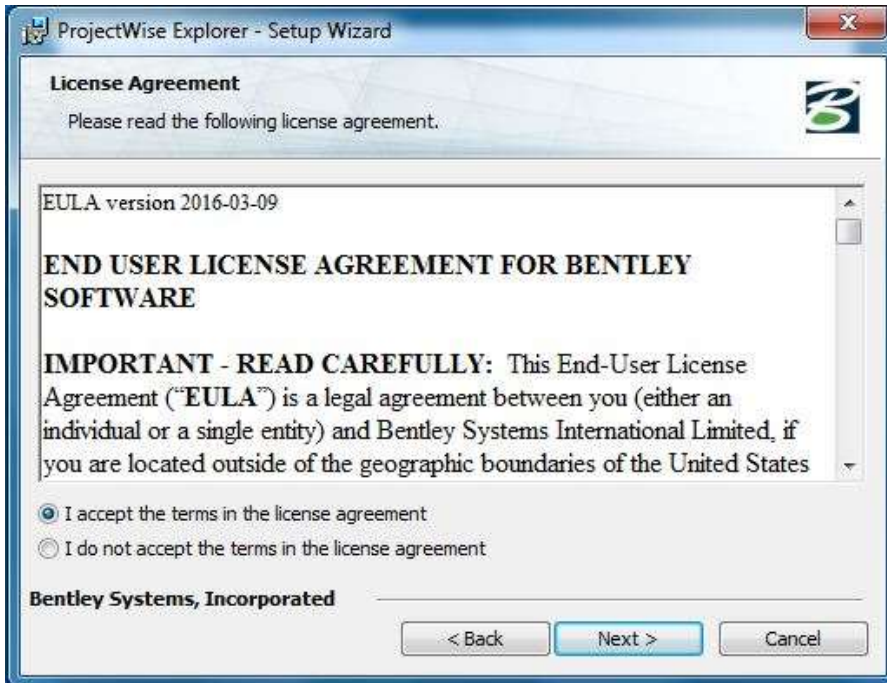
NOTE:

You must have administrative privileges on your computer in order to install and configure the ProjectWise Explorer application, if you do not have such privileges please contact you're IT department.

- 1) Using your internet browser navigate www.lan-inc.com >> LAN ProjectWise
- 2) Under the "Software Downloads" section click on Projectwise Explorer
- 3) Select "Save" then extract the contents of the ZIP file to a folder on your hard drive, if you encounter any issues extracting the ZIP file, please download 7ZIP also located under "Software Downloads"
- 4) Double click on the Setup Projectwise EXE file and follow the steps to complete the installation
- 5) On the opening dialog box select "Accept" then NEXT
- 6) Select the options as shown and click Install



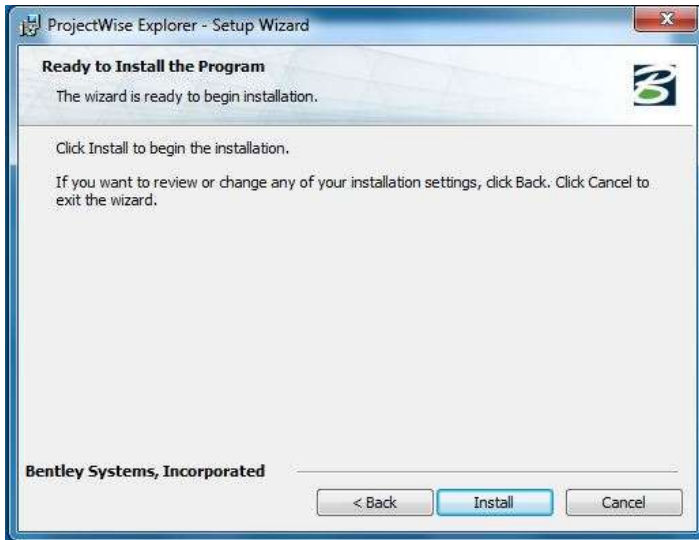
7) Select "I accept the terms in this license agreement" and click next



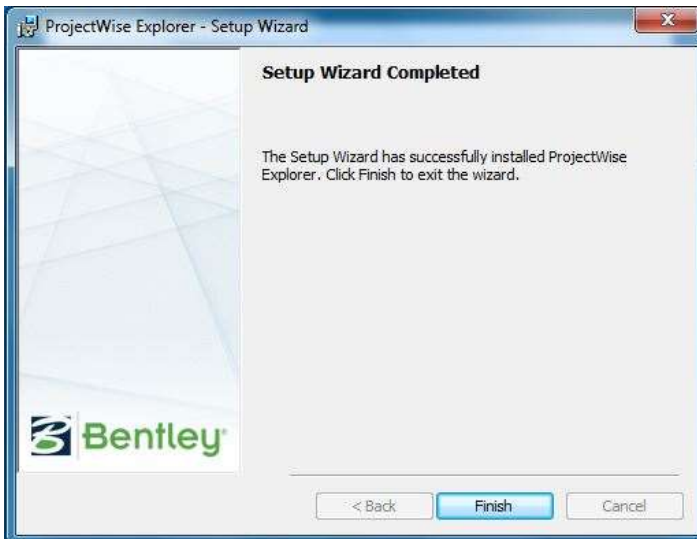
8) Select Typical then select next



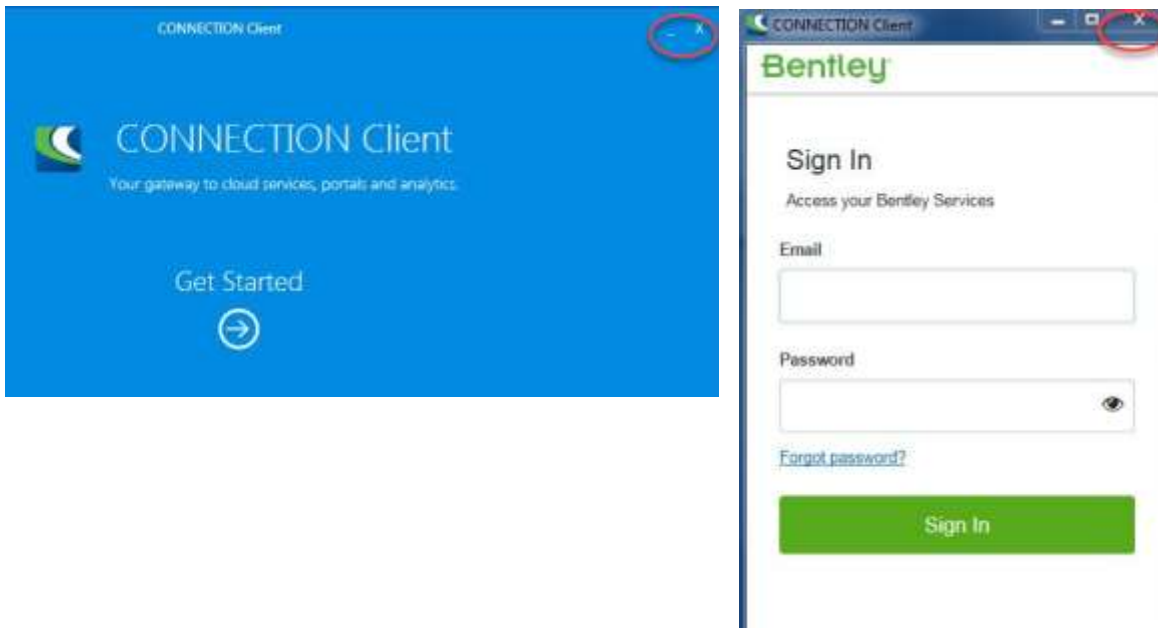
9) Select INSTALL.



10) On the setup dialog box select FINISH, then select FINISH on the Connect dialog box.

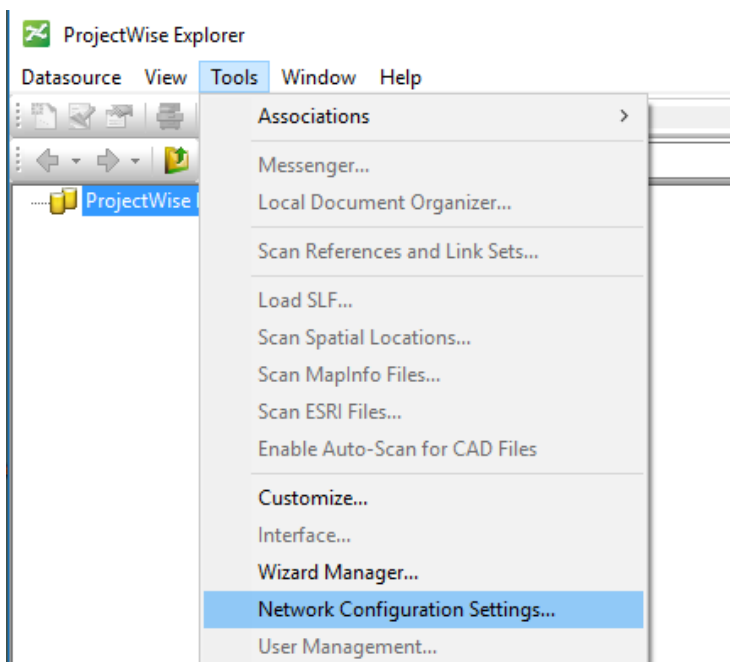


- 11) We will not be using Bentley Connection Client, close the 2 dialog boxes by clicking on the X on the top right of the dialog boxes

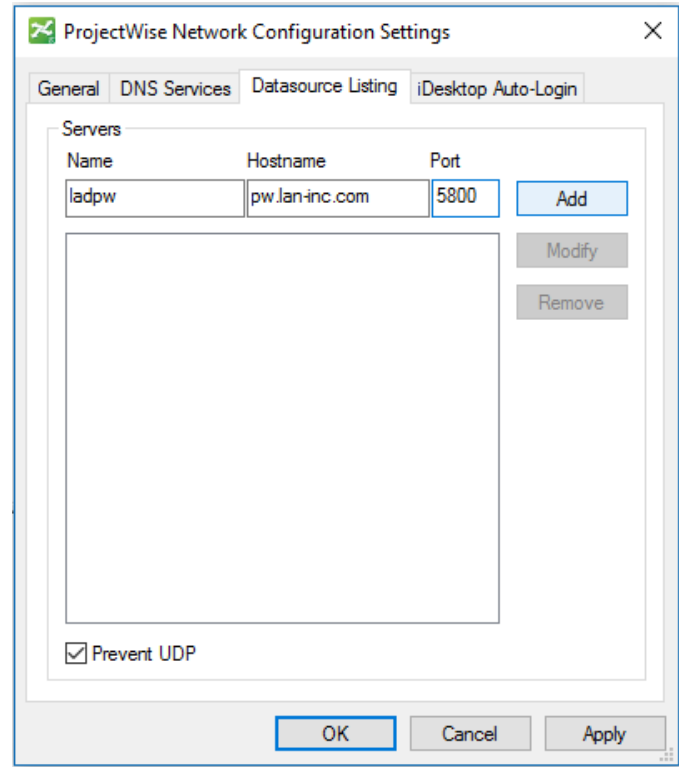
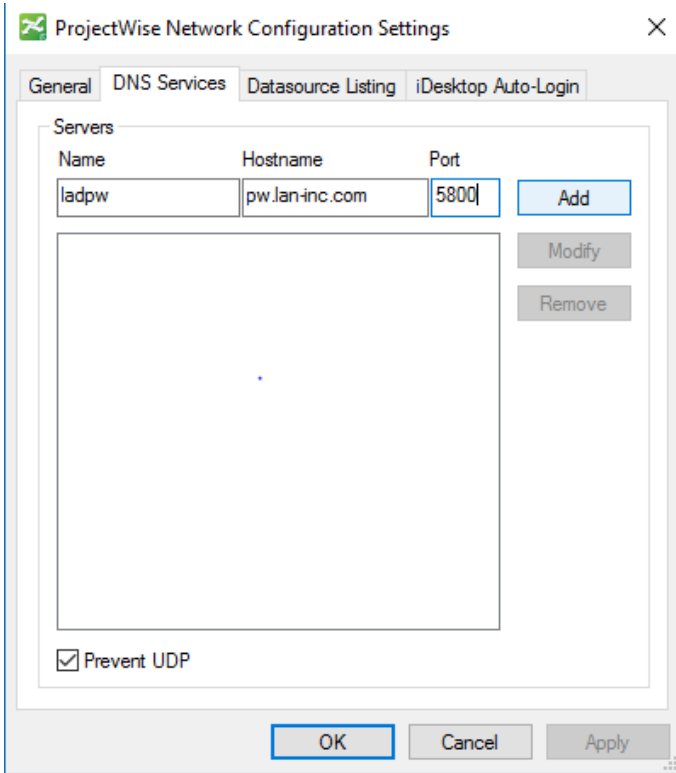


Configuring the LAN – ProjectWise Datasource

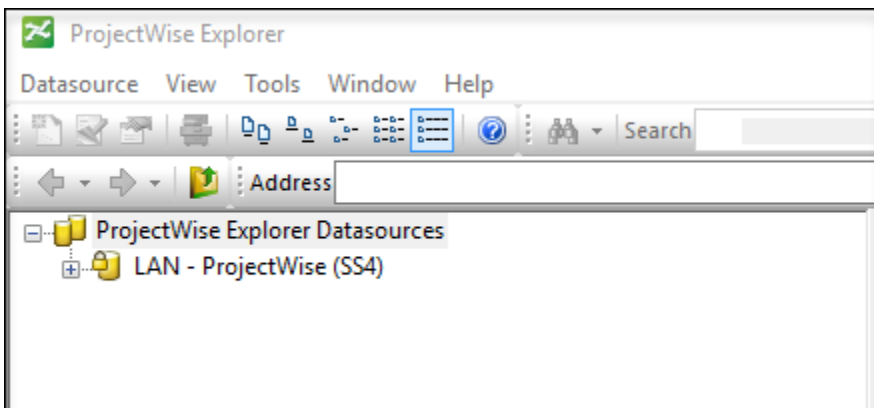
- 12) Start Projectwise Explorer by selecting start, All Programs, Bentley, Projectwise Explorer
- 13) In Projectwise Explorer select Tools and select Network Configuration Settings



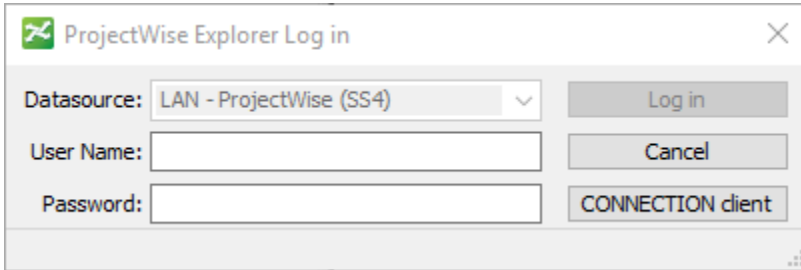
- 14) Select the DNS tab and enter the setting as shown and click Add. Select the Datasource Listing tab and enter the same settings. Ensure that the “Prevent UDP” box is checked on both tabs. Click Apply and Ok.



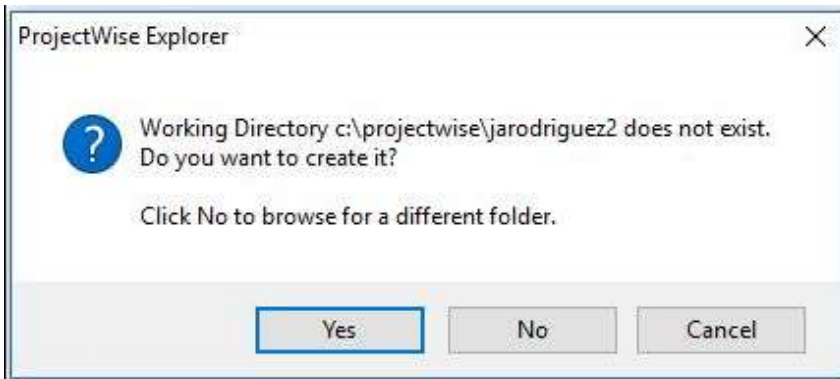
- 15) Close Projectwise Explorer by clicking on the X on the top right or by clicking on Datasource, Exit.
- 16) Open Projectwise Explorer from the start menu, you should now see the LAN Projectwise Datasource. Click the + to expand folders.



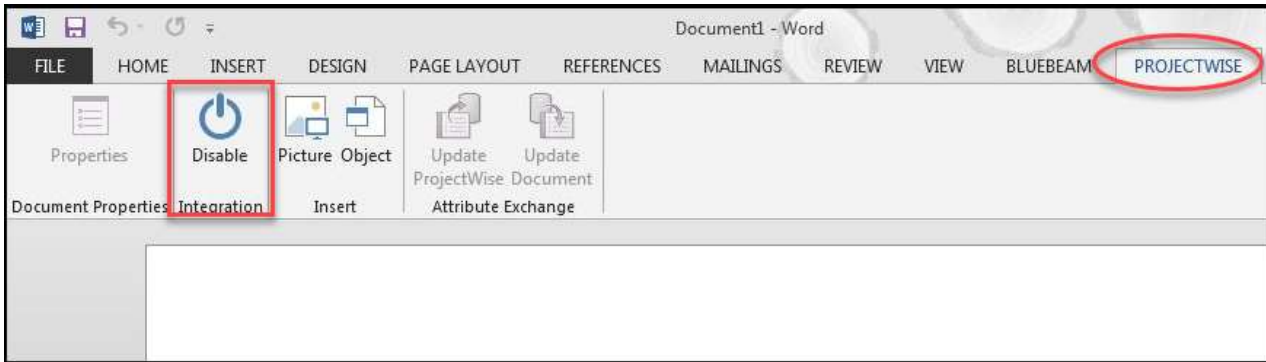
- 17) The Projectwise Explorer Login dialog box appears, enter the credentials provided by LAN Projectwise Administrator or by contacting an LAN Project Manager.
Click Log In.



- 18) During Projectwise authentication you will be prompted to create a working directory, **select yes to continue**. This Projectwise directory is a caching folder created on your C drive and is for Projectwise use only, do not work in this folder, all file and folder actions should be done in Projectwise Explorer.



- 19) Projectwise will integrate with installed applications including Office products. If you need to disable Projectwise integration it can be done from within Office products, select the Projectwise tab and select the disable button, this will prevent Office products from accessing Projectwise. The integration can be enabled as needed.



Projectwise configuration is complete. For additional Projectwise instructions and training please refer to Projectwise Explorer Help tab or additional documentation such as the “LAN Projectwise Quick start manual” located here:

`pw:\\ladpw.ladco.int:projectwise\Documents\Libraries\ProjectWise\Documentation_ProjectWise V8i Quick Start Manual v07.pdf`